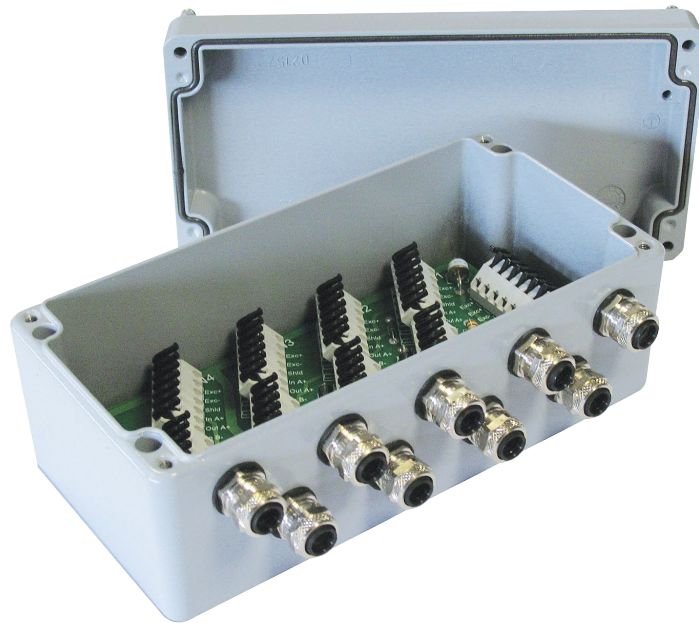


Junction Box DLCJB-A



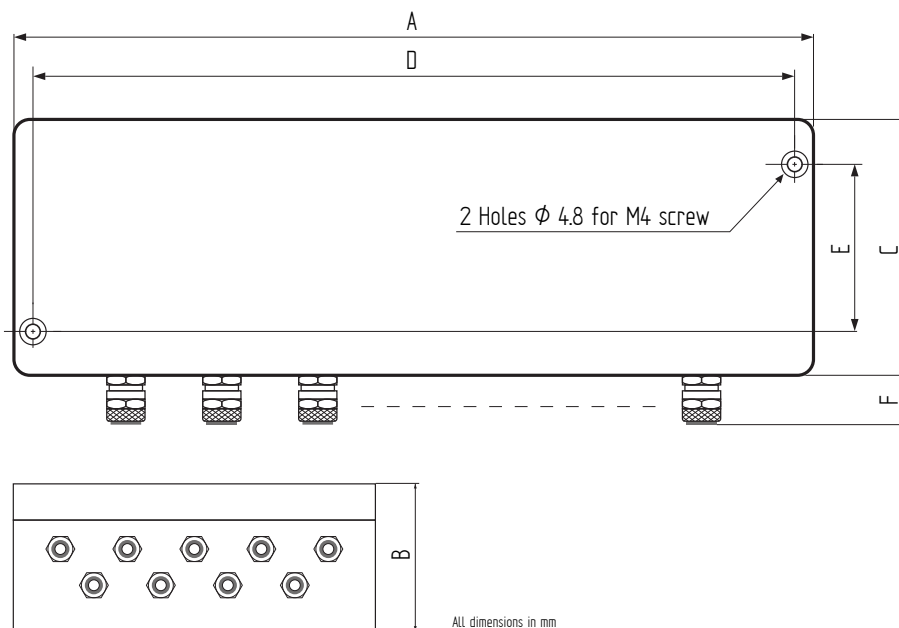
Performance Features

- Junction box made of aluminum with epoxy varnish
- Level of protection: IP65
- Connection by spring clamps
- Over-voltage protection

Application

- Connection of digital load cells with RS485 outputs (2-wire BUS)
- Versions for 8 or 10 load cells wiring
- Suitable for 4- or 6-Wire technology

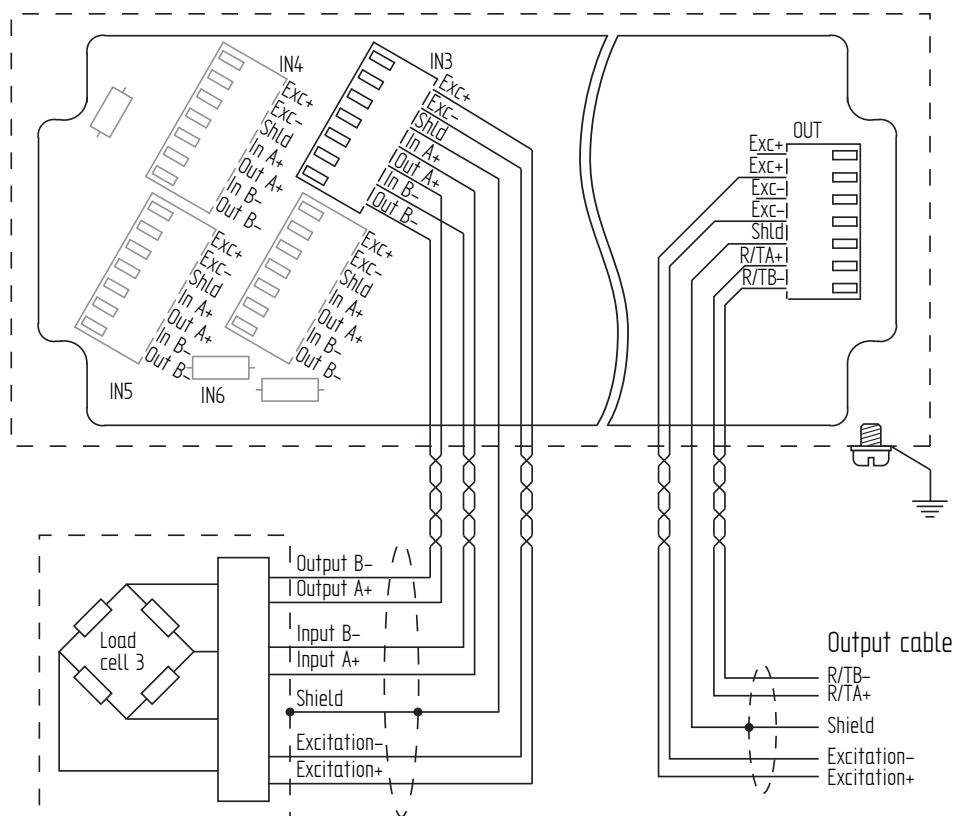
Dimensions in mm



Article-No.	Description	A	B	C	D	E	F
47350	DLCJB-A8 GDT ¹	200	81	100	186	66	16
50575	DLCJB-A10 GDT ¹	260	91	160	240	110	25

¹ Protection type Gas Discharge Tube: 10 KA/20 KV (8/20 µs) - IEC 61000-4/5

Connection



Technical Data

Type	DLCJB-A	
Version	DLCJB-A8	DLCJB-A10
Housing		
Material	Aluminum	
Coating	Epoxy varnish, color gray	
Protection level	IP65	
Cable gland		
Material	Nickel-plated brass	
Cable section input load cell standard	Ø 4 ... Ø 8 mm	
Cable section output standard	Ø 5 ... Ø 10 mm	
Quantity	9	11
Electronic board		
Load cell Input terminals	8	10
Output terminal (amplifier)	1	
Wire cross section of cable strands	0.15 mm ² - 1 mm ²	
Terminal block type	Spring clamp, tool free	
Connection type	RS485, 2-wire BUS	
General		
Nominal temperature range	-40° ... 60° C	
Weight	1.3 kg	2.4 kg
Included accessories	4 Cable gland plugs	
Lightning protection		
Protection type	Gas Discharge Tube	
Specification	10 KA/20 KV (8/20 µs) - IEC 61000-4/5	