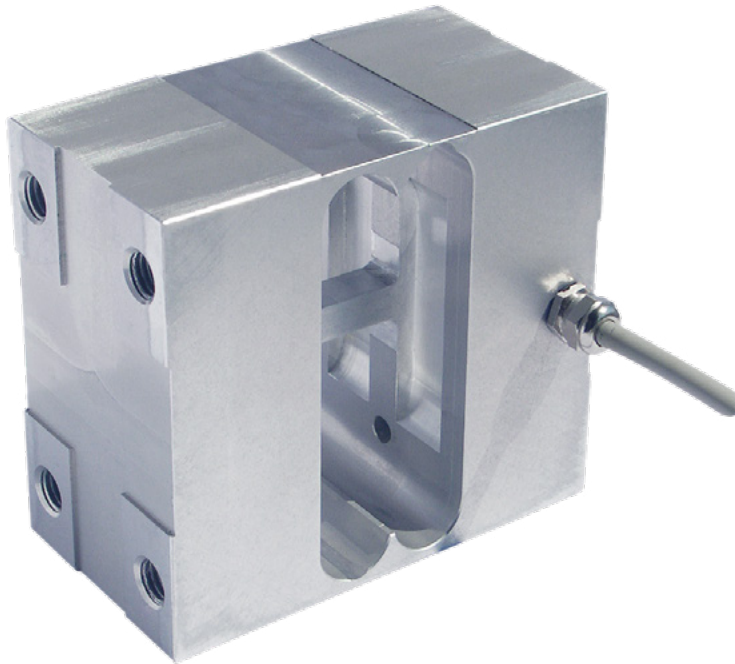


Single Point Load Cell BEF-F with a Rated Load of 150 kg

Data sheet

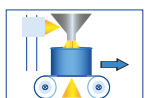


Performance Features

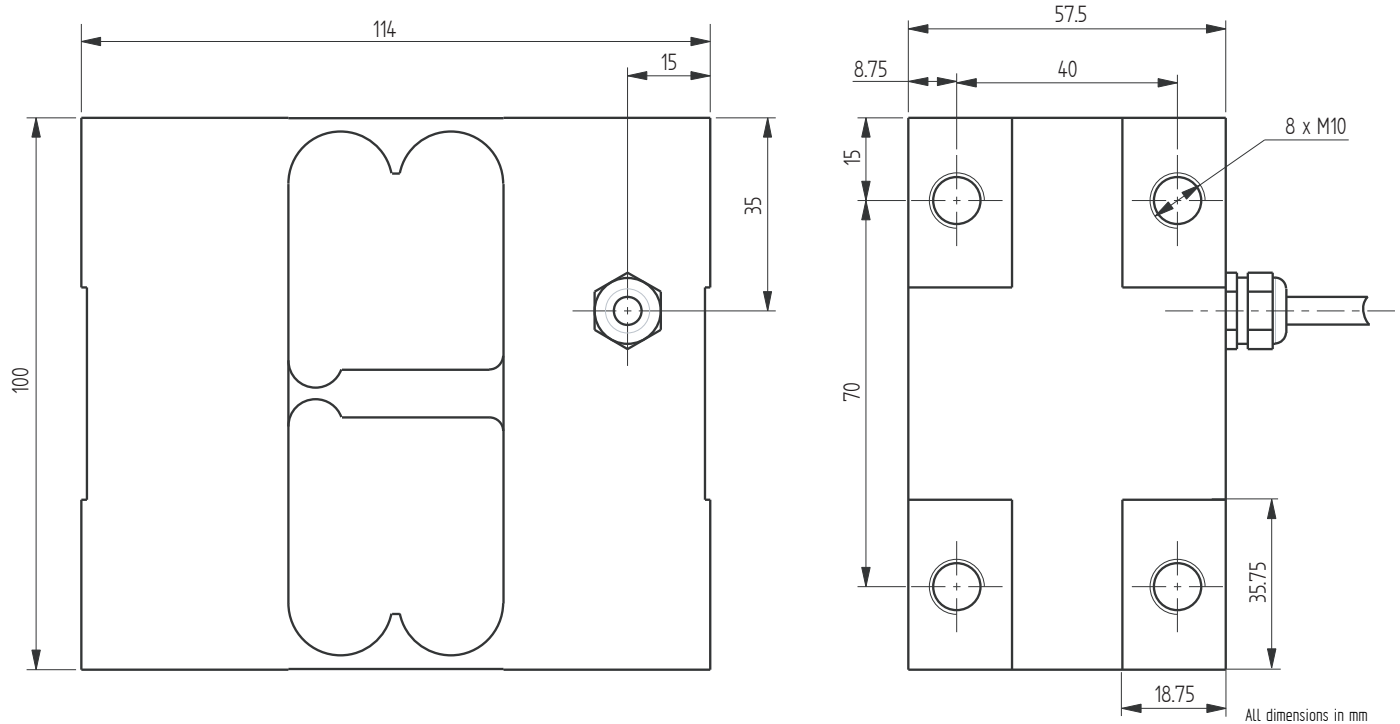
- Single point load cell made of anodized aluminum
- IP67 protection level
- Suited for tank weighing with side mounting
- Designed for platforms of maximum dimensions 600 mm x 600 mm (off-center load compensate)
- 6-wire technology
- Designed for use in harsh environments

Application

- Food industry
- Coal and steel industry
- Chemical / pharmaceutical industry
- Waste management / recycling
- Packaging technology



Dimensions in mm



Article-No.	Version	Rated load [kg]
112391	-	150

Connection Assignment

Electrical Connection		
Function	Wire Color	
Excitation (+)	Red	●
Signal (+)	Green	●
Signal (-)	White	○
Excitation (-)	Blue	●
Sensing (+)	Pink	●
Sensing (-)	Gray	●

Technical Data

Type	PM	
Version		-
Rated load E	kg	150
Maximum load for approved weighing E_{max}	kg	150
Accuracy class OIML R60		-
Maximum numbers of load cell intervals n_{max}	d OIML	-
Minimum verification interval v_{min}	g	-
Creep division factor $Z = E_{max}/2 \times DR$		-
Combined error	% E	±0.033
Temperature coefficient of zero signal	% E/°C	±0.006
Temperature coefficient of characteristic value	% E/°C	±0.0016
Load creep d_{cr, F} in 30 min.	% E	±0.03
Zero balance	% E	±5
Rated output at E C_{nom}	mV/V	1.2 ±10 %
Rated range of excitation voltage B_{U, nom}	V	1 ... 15
Input resistance R_e	Ω	410 ±20
Output resistance R_a	Ω	350 ±5
Insulation resistance R_{is}	MΩ/50V	5
Electrical connection		Cable, PVC, 3 m
Rated temperature range B_{T, nom}	°C	-10 ... 40
Operating temperature range B_{T, G}	°C	-20 ... 60
Limit load E_{lim}	% E _{max}	150
Breaking load E_b	% E _{max}	200
Tightening torque	Nm	40
Maximum platform dimension	mm	600 x 600
Level of protection		IP67
Material		Aluminum
Weight	kg	1.25

Options

Article-No.	Description
111735	Protective coating

Accessories

Electrical Connection

Article-No.	Description
10323	Male cable connector KS6 (6-pin, Series 581) incl. mounting
10320	Male cable connector KSSH15 (15-pin) incl. mounting
43418	Input connector ZA9612FS (ALMEMO) incl. sensor mounting and connector calibration
49205	Input connector ZKD712FS (ALMEMO 202) incl. sensor mounting and connector calibration

Weighing Electronics

ALCJB-A	CPJ/CPJ2S	IPE50 Panel
		

Further suitable accessories you can find on our homepage under:

https://www.lorenz-messtechnik.de/english/products/lc_weighing-electronics.php